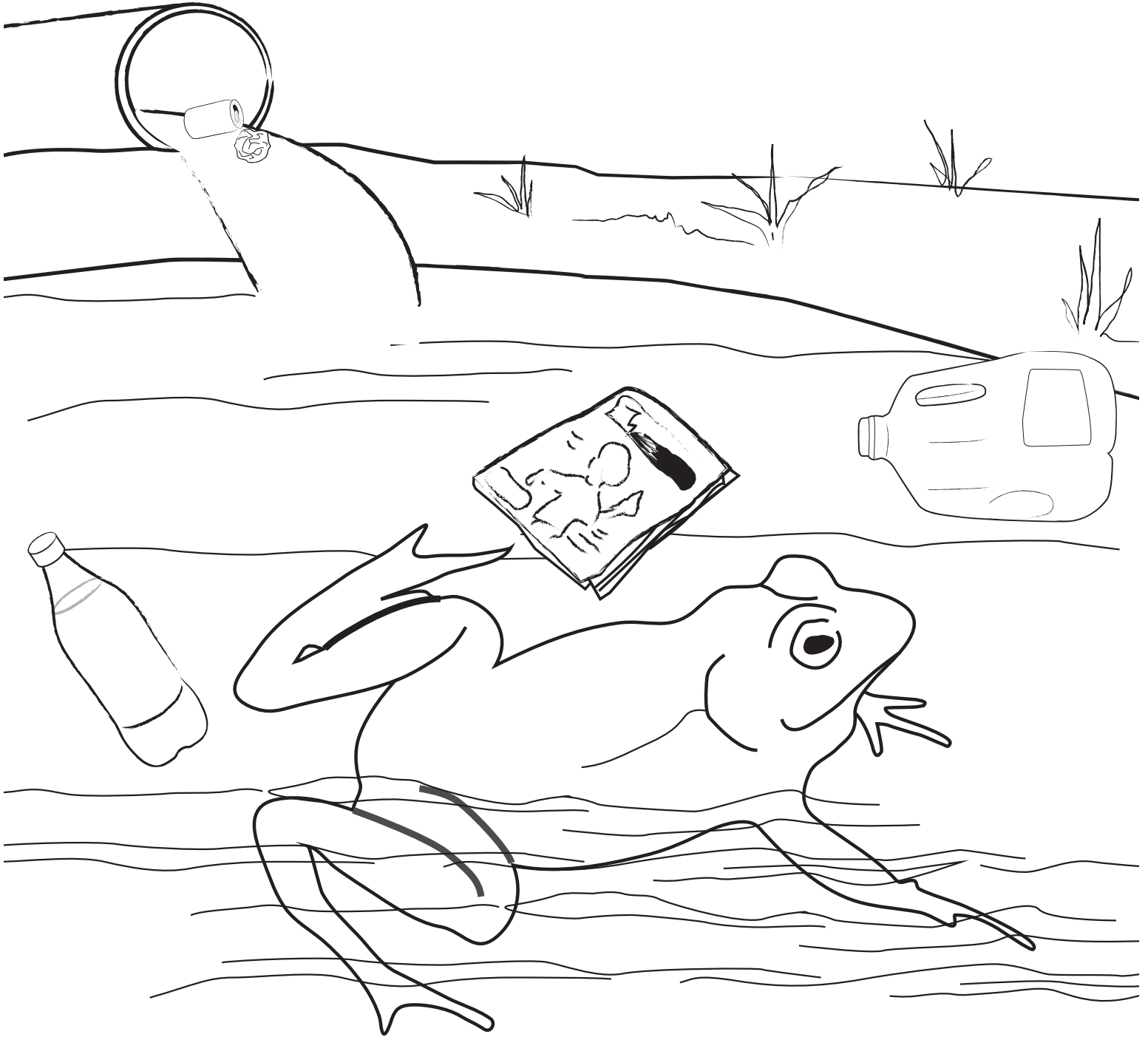


Color each litter item being carried into the waterway by the storm drain. Help protect **Clog the Green Frog** by recycling. Remember, recycling is the key! Clean water is essential for you and me!



JEFFERSON COUNTY
DEPARTMENT OF HEALTH



Jefferson County Department of Health
Watershed Protection Division

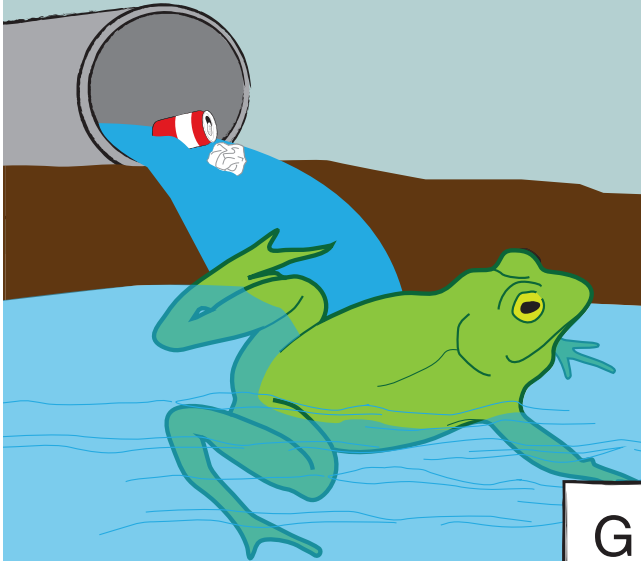
www.jcdh.org/wpd

DON'T LEAVE YOUR WASTE IN MY PLACE

A storm drain is designed to carry excess storm (rain) and ground water from parking lots and streets to prevent flooding. Litter and waste contaminants that storm water carries from road ways can contribute to water pollution that may harm animals, drinking water and the environment.

Children play a part in protecting our streams by educating their friends on recycling and keeping litter such as soda cans, plastic bottles, plastic bags and paper out of the waterway.

Clog the Green Frog has waste at his place. Help protect Clog from litter items being carried into the waterway by the storm drain. Find each litter item listed below in the word search.



EGG CARTON
FOAM CUP
MAGAZINE

MILK JUG
PAPER
PLASTIC BOTTLE

PLASTIC BAG
SIX PACK RING
SODA CAN

G	G	N	I	R	K	C	A	P	X	I	S	B
E	L	T	T	O	B	C	I	T	S	A	L	P
A	U	E	X	K	X	N	M	A	X	N	G	X
T	M	D	N	B	E	L	G	Z	O	L	A	N
O	I	W	V	I	I	T	D	T	I	T	B	V
V	L	C	T	S	Z	O	R	A	P	O	C	T
X	K	B	Y	F	O	A	M	C	U	P	I	Y
E	J	M	A	G	C	D	G	G	C	P	T	A
I	U	G	Z	G	U	F	A	A	U	F	S	Z
P	G	D	G	A	Q	D	I	C	M	D	A	G
K	O	E	A	T	K	W	V	T	A	W	L	A
R	C	S	P	A	P	E	R	O	P	N	P	P



JEFFERSON COUNTY
DEPARTMENT OF HEALTH

STORM WATER
MANAGEMENT AUTHORITY, INC.

Jefferson County Department of Health
Watershed Protection Division

www.jcdh.org/wpd